



CommVault® Simpana®



"With CommVault, we're assured that if anything happens to our information, if there's any problem, we can quickly get the system back up and running."

Charles Orndoff
VP Infrastructure Services
CROSSMARK

Top Five Reasons Why Customers Choose Microsoft and CommVault Solutions

1. Single, unified Windows centric solution enables backup, recovery, archiving, content management, and compliance solutions.
2. Powerful, granular data management for Microsoft Exchange Server, Microsoft SharePoint Products and Technologies, Microsoft SQL Server, Microsoft Active Directory (& ADAM), Microsoft Office Communications Server (OCS), Microsoft® Virtual Server and Windows Server®.
3. Assists and accelerates Microsoft upgrades to the latest operating system and application versions.
4. CommVault software enables Windows to manage Windows, plus UNIX, Linux, and Netware.
5. De-Duplication / Single Instance Storage (SIS) of various data types enabling de-duplication at the application and operating system level reducing the total amount of storage used.

Windows® Centric, Unified Data Management for Heterogeneous Environments

Solution Overview

CommVault® Simpana® Software Suite is a unique Data Management solution comprised of modules designed on a single Windows code base. It is **64-bit optimized** and shares a single set of enterprise-level services. **The Microsoft® FAST integrated Content Search for Business Productivity, Archive, Replication, Backup, Application Integrated Granular Recovery, Data Mining, Resource Management, and Search modules** are designed to provide singular efficiency, performance, reliability, and control over the enterprise to help manage data growth, lower costs, reduce risks and assist/accelerate upgrades. CommVault software uses an expandable range of application modules and shares a single set of back-end services (Common Technology Engine) to deliver leading-edge functionality that truly unifies and simplifies enterprise data management and maximizes cost effectiveness. This approach ensures granular, "Release Independent" application recovery to enhance the management of the Microsoft® Exchange Server 2007 environment, Microsoft® Office SharePoint® Server, Windows, Microsoft® Office Communications Server (OCS), Microsoft® SQL Server®, Microsoft® Active Directory® and ADAM.

CommVault's **"Release Independence"** can assist and accelerate your new install or upgrade to Office SharePoint Server 2007, Windows® SharePoint® Services 3.0, Exchange Server 2007, the next version of SharePoint Server or the latest version of Windows. CommVault software adds granular management (backup, archiving and restore) of various Exchange and SharePoint items such as messages, contacts, sites, documents, lists, .ASPX pages, templates, contacts, etc. The granular management allows you to manage all versions of various Exchange and SharePoint items.

The **CommVault archiving** features enable faster, trimmer, better performing Exchange and SharePoint servers by archiving items based on policy (size, age, version count) out of the SharePoint server but still enabling users to easily recall archived data through the use of Web Parts. Administrators can run native Exchange or SQL Server utilities to **reclaim disk space and database "white space"**.

CommVault software's **archiving** and compliance capabilities enable SharePoint data to be used within regulatory compliance guidelines. **Data can be searched and recalled based on content**, regardless of whether or not it is directly embedded in SharePoint, Exchange or within the Windows environment.

The CommVault® Simpana® suite **is tightly integrated with SharePoint Records Center**, enabling CommVault software to be the foundation for records management across the enterprise. Policies can be set across the **heterogeneous enterprise** (including Exchange, Windows and heterogeneous File Systems) for data automatically input into Records Manager.

CommVault software's foundation includes **DeDuplication / Single Instance Storage (SIS)** ensuring less storage space is used for backup and archiving.

Business Pain Points Addressed

- **Single data management solution** offering backup/recovery, archiving, replication, deduplication and content search through a centralized browser interface and Microsoft® Office Outlook®.
- **Integrated archiving** by document size, age and version management enabling administrators to only keep recent versions of items stored while allowing users to recall any and all versions of a document.
- **Granular management** of Exchange, SharePoint and Active Directory.
- Regulatory compliance assistance with the ability to backup all versions of items.
- **Microsoft FAST indexing** enabling enterprise wide, application integrated searches.
- **Records Center integration**, delivering a heterogeneous solution utilizing SharePoint Records Center across the enterprise.
- Automatic **Resume-Ability** enables interrupted backups, archives and restores to continue where they left off.
- **Policy-based "Active-Archiving"** enables users to easily remain within file system quotas while still allowing access to older, less-used data.
- **Data management for the Windows Server System™** foundation in which SharePoint resides.
- **Single interface** manages Exchange, SQL Server, Windows, Microsoft Business Solutions, Active Directory, OCS and SharePoint data.
- **Easy tiered storage management** as secondary, tertiary and more copies can be created within your enterprise for simple "Disk to Disk to <other>" media management.

CommVault Simpana

Contact Info



CommVault

2 Crescent Place
Oceanport, NJ 07757, USA
www.commvault.com/microsoft
E-Mail: microsoft@CommVault.com

Primary Business & Technical Contact

Randy De Meno
Chief Technologist – Windows Technologies &
Microsoft Partnership
Phone: +1 732-870-4038
E-Mail: RDeMeno@CommVault.com

Headquarters Contact

Phone: +1 732-870-4000



Microsoft Corporation

One Microsoft Way
Redmond, WA 98052, USA

US Field Partnering Manager

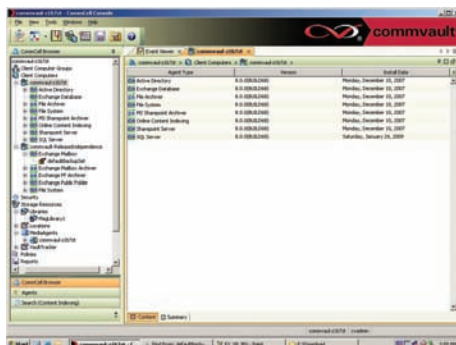
Teri Doyle
Business Development Manager
Phone: +1 425-421-7646
E-Mail: Teri.Doyle@microsoft.com

Primary Business Contact

Dan Arildson
Senior Business Development Manager
Phone: +1 425-705-5290
E-Mail: darilds@microsoft.com

Executive Contact

Nagi Babu Punyamurthula
Director
Phone: +1 425-703-4403
E-Mail: nagibabu@microsoft.com



*One unified solution for
enterprise data management*

Technical Pain Points Addressed

Thorough knowledge of Windows Server gives the CommVault family of products the ability to restore data at the finest granularity in the industry, including:

- Backup, recovery, migration, archiving, data mining, content search and quick recovery of **granular items**, from Exchange, Active Directory, SharePoint, and the Windows Server System environment.
- **DeDup / SIS** at the Block level is application aware, reducing overall storage of backup and archive data.
- **"SnapBackup"** enables multiple point-in-time snapshots (VSS) and the ability to recover applications quickly.
- **Active Directory & ADAM** agent enables management of objects and attributes, including the ability to recreate an object with Security Identifying Information (SID) for Windows Server.
- **Continuous data replication (CDR)** for Exchange, SharePoint and the environment in which they reside.
- Worldwide management via a **browser-based interface**.
- Multiple language support.
- **Simple off-site data management** with the ability to mix and match media types (Disk, SAN, NAS, Tape, Magneto-Optical, DVD, etc). Simple setup of **D2D2T**.
- **Simplified reporting** can include custom reports sent to mobile devices.
- **Cross-server & cross-platform restore capability** enables the movement of small and large data from one FAST environment to another.
- **VSS integration** for Exchange, Active Directory, SharePoint and SQL Server with **"Generic Requestor"** capability enabling a single operation for hardware/provider based snapshots regardless of vendor.
- **Synthetic full backup** offers the ability to significantly reduce the number of full backups and media used for storage.
- **Accelerate your upgrade** to the latest Exchange, SharePoint and Windows technologies. 64-bit optimization ensures high performance allowing you take full advantage of the 64-bit server technology and 64-bit Windows Server software.
- **Remain within storage quota limits** with archiving to less expensive storage.
- **Web part integration** for seamless SharePoint recalls of documents from secondary and tertiary storage.
- **CommVault professional services:** Broad worldwide coverage and support available for rapid installation that can be tailored to your environment.

About CommVault

The CommVault® Simpana® Windows Centric Data Management solution enables you to use 1 SINGLE, UNIFIED Data Management solution which will optimally perform the tasks of many other disparate solutions. Simpana Windows Centric solutions are the result of extensive collaboration between Microsoft and CommVault.

Use Windows to easily manage SharePoint, Exchange, Office Communications Server, SQL Server, Windows and heterogeneous environments such as UNIX, Linux, NDMP, NetWare, GroupWise, Oracle, Sybase, DB2, Notes/Domino, Informix and MAC data.

CommVault is a Gold Certified partner recognized as a 2006 Microsoft Innovation Technology Partner of the Year Finalist.